

MIDI Setup MIDI

Select MIDI IN and MIDI OUT ports Prophet '08 is physically connected to.

The status text should display: DSI: PROPHET'08 ON-LINE. If not connected then manually check GLOBAL settings on the Prophet '08.

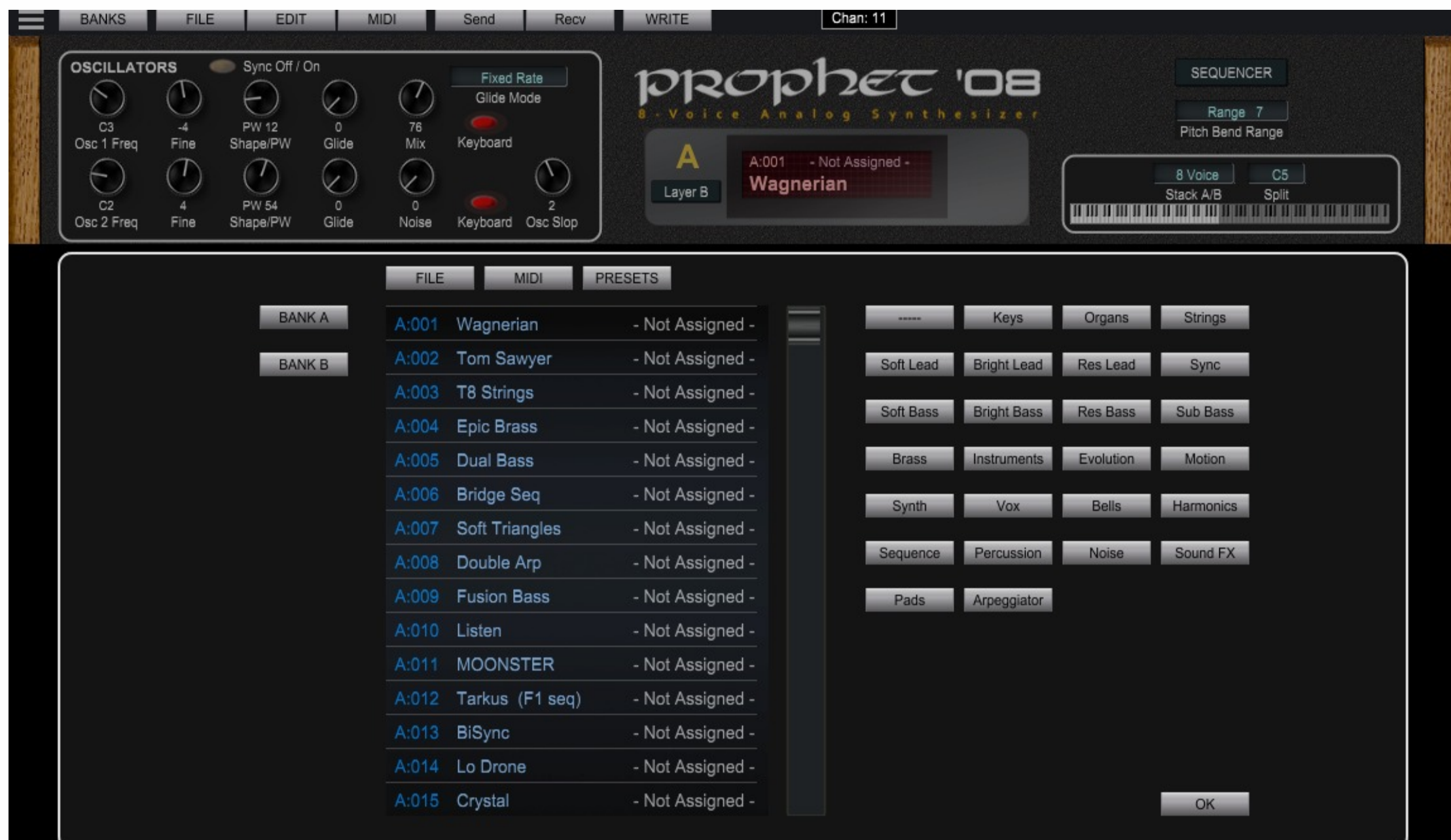
For the PlugSE to communicate with the Prophet '08, the Global SysEx (system exclusive) settings should be set as follows:

- MIDI Channel = All channels
- MIDI sysex send/receive = ON
- MIDI Controller Send = ON
- MIDI Controller Receive = ON
- Parameter send = NRPN
- Parameter Receive = ALL
- Pot mode = Jump

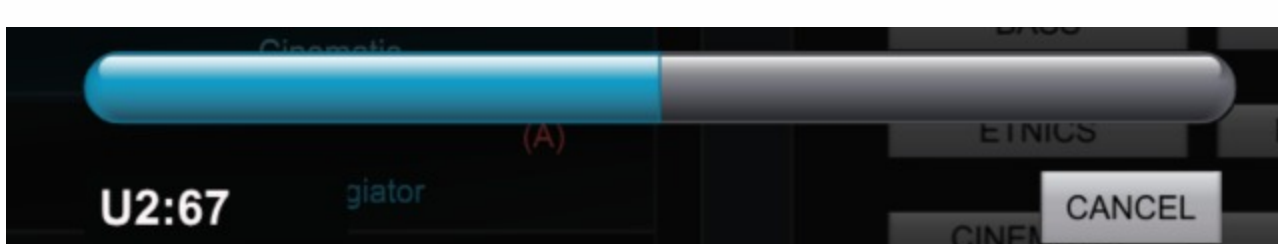
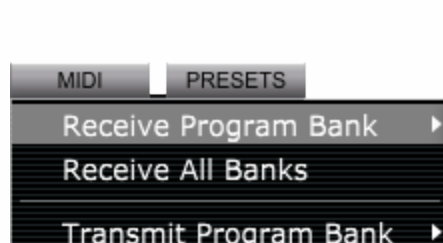
The PlugSE controls more than a thousand parameters and is using NRPN commands that are received and transmitted. To enable NRPN controllers set:

Note: All of the above GLOBAL settings changes must be done manually on the Prophet '08 panel. In order to save changes exit the Global mode.

Prophet '08 Banks BANKS



Using the bank panel you can access and select all programs in the Prophet '08 USER and FACTORY banks. In order to import all programs to the PlugSE use MIDI RECEIVE functions.



On the left of the Bank Panel there are BANK buttons that bring up a content of a selected bank. On the right side there are CATEGORY buttons that filter all USER programs according to a selected category.

Double-clicking on the program list select a program on the Prophet '08 and closes the Banks Panel.

You can import Program banks saved in files by clicking on the FILE button.

Supported formats are:-

- *.syx (Raw SysEx data) containing PRO 3 program banks.
- *.pro3b , Prophet '08 Editor bank files.

Bank files are loaded to the currently selected bank. If you select different bank destination, click on a different bank button to select another current bank.

For a convenience, if you like to revert or reload the original factory programs you can use the PRESET button. Again, like with the bank files, selected factory banks will be loaded to the currently selected bank.

Preset Manager / Librarian

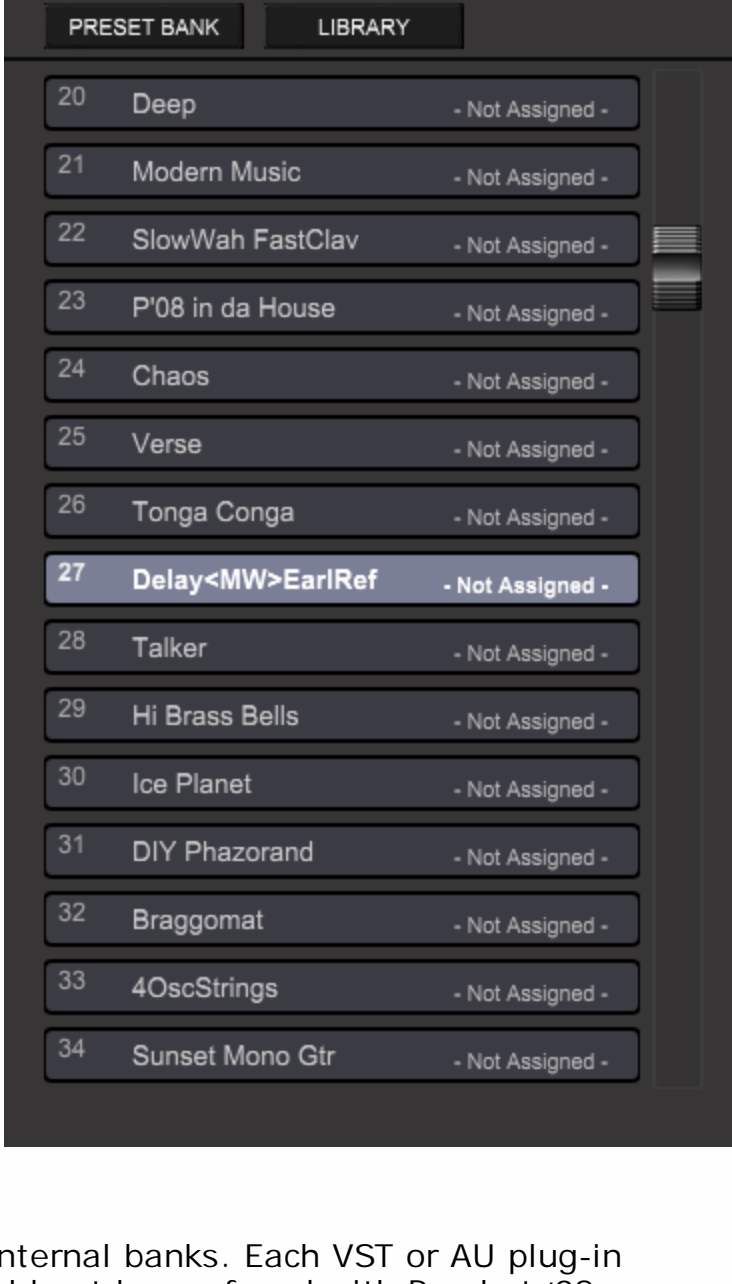
Preset Manager and Librarian can be accessed from the File Menu or by click in on the top-left corner.



The Preset Manager window has two sections:



Preset Bank Mode manages the preset bank that used the host. It is exactly the same list of presets that the VST/AU host displays for preset selection on a track.



Unlike the Bank Manager, the Preset Manager or Preset List does not select physical programs from the Prophet '08 internal banks. Each VST or AU plug-in comes with its own separate preset bank. In case of the Prophet '08 plug-ins this is a totally separate bank that should not be confused with Prophet '08 USER or FACTORY banks that the PlugSE displays on the Bank Manager panel.

The PlugSE's preset bank comes preloaded with programs from the Prophet '08 Factory Bank 1 and therefore may look similar to Prophet '08 internal bank.

When you select programs in the Bank Manager, you are selecting programs in Prophet '08 internal banks using Bank/Program MIDI commands.

Selected programs are loaded from the internal banks to be played.

When you select select presets using the Preset Manager or Preset List then selected preset programs are sent to the Prophet '08 to be played. Preset programs loaded in that way temporary replace programs in Prophet's so called Edit Buffer.

The Preset Program Bank data is saved within the VST/AU project and it is loaded bank when you open saved project.

Preset Manager Functions

LOAD - You can either replace the whole Preset Bank or just load one program to it. To load just one program, first select destination location on the list.

SAVE - Saves the whole Preset Bank or selected single presets.

SET CURRENT - Inserts the currently playing preset program into the Preset Bank. Select a destination location on the list first.

RENAME - Renames the selected Preset Program.

APPLY - Applies a selected preset program. It selects the current preset location in the host preset bank and sends the selected program to the Prophet's Edit Buffer for playing.



Librarian Mode provides an easy access to Prophet '08 librarian files where Prophet programs are organized and saved according to their assigned sound category. To switch to Librarian Mode click on the LIBRARY button. There are about category 30 buttons under each the number of programs in that particular category is displayed.